

# William Woods University Enrollment Quick Facts

## Traditional Undergraduate Division

Fall 2017

### Incoming Student Demographics<sup>1</sup>

	Incoming Students (All)	New Students	Transfer Students
Total Count	260	202 (77.7%)	58 (22.3%)
Average Age	19	18	21
Age Range	17-45	17-25	18-45
Female	172 (66%)	140	32
Male	88 (34%)	62	26
Full-Time	256 (98%)	201	55
Part-Time	4 (2%)	1	3
States Rep. <sup>2</sup>	25	22	13
International <sup>3</sup>	16 (6%)	8	8
Countries Rep. <sup>4</sup>	10	6	6
Minority <sup>5</sup>	41 (17%)	27	14
Average ACT	22.8	22.9	22.2
Average SAT	1081.3	1076.4	1135.0
Avg. H.S. GPA	3.38	3.33	3.54
Greek	90 (34.6%)	78	12
Athlete	99 (38.1%)	76	23

#### Top Five States<sup>2</sup>:

1. Illinois (17)
2. California (9)
3. Kansas (7)
4. Colorado (6)
5. Oklahoma (6)

#### Top Five Countries<sup>4</sup>:

1. United Kingdom (5)
2. Brazil (2)
3. Germany (2)
4. Australia, Canada, Grenada, Honduras, Mexico, Norway, Spain (1)

#### Top Five Majors (Excluding Unknown):

1. Biology (BS) (23)
2. Equestrian Science (19)
3. ASL – English Interpreting (14)
4. Exercise Science (13)
5. Business Administration (10)

### All Student Demographics<sup>6</sup>

	Students (All)	Female	Male
Total Count	777 <sup>7</sup>	543 (70%)	230 (30%)
Average Age	21	21	20
Age Range	17-78	17-78	17-29
Full-Time	722 (93%)	506	215
Part-Time	55 (7%)	37	15
States Rep. <sup>2</sup>	31	29	16
International <sup>3</sup>	47 (6%)	14	33
Countries Rep. <sup>4</sup>	19	11	12
Minority <sup>5</sup>	93 (13%)	57	36
Greek	298 (38.4%)	224	74
Athlete	255 (32.8%)	110	145
Living On Campus	586 (75.4%)	419	166
Freshman	320 (41.2%)	206	111
Sophomore	128 (16.5%)	101	27
Junior	143 (18.4%)	101	41
Senior	186 (23.9%)	135	51

#### Top Five States<sup>2</sup>:

1. Illinois (78)
2. California (21)
3. Kansas (17)
4. Oklahoma (14)
5. Colorado (12)

#### Top Five Countries<sup>4</sup>:

1. United Kingdom (13)
2. Brazil (8)
3. Argentina (3)
4. Canada (3)
5. Netherlands (3)

#### Top Five Majors (Excluding Unknown):

1. Business Administration (97)
2. Biology (BS) (66)
3. Equestrian Science (65)
4. ASL – English Interpreting (47)
5. Equine General Studies (43)

<sup>1</sup> Degree seeking only. Incoming determined by entrance year and term. New vs. transfer determined by Entrance Code.

<sup>2</sup> Excludes Missouri.

<sup>3</sup> Based on country of citizenship, not United States of America.

<sup>4</sup> Excludes United States of America.

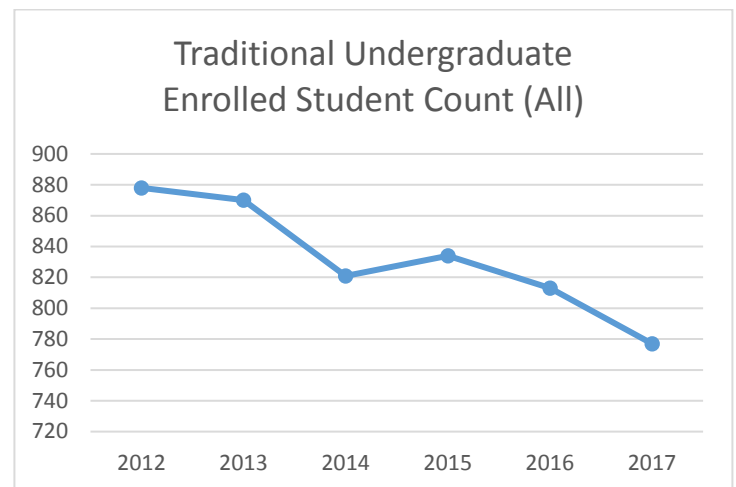
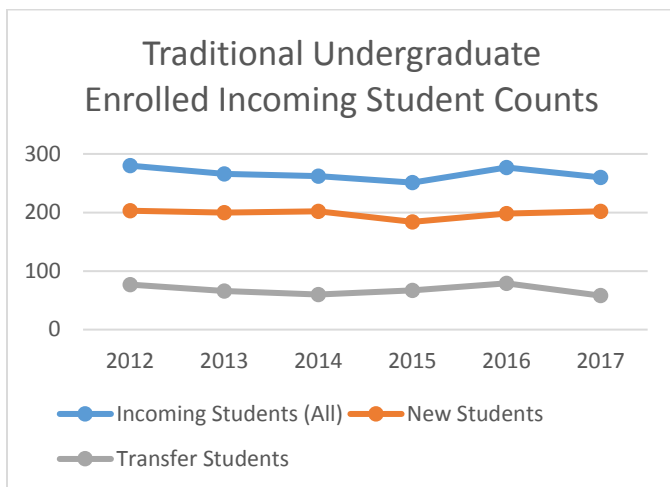
<sup>5</sup> Excludes "White", "Unknown", and "Non-Resident Alien".

<sup>6</sup> All traditional, undergraduate students enrolled. Includes both degree seeking and non-degree seeking.

<sup>7</sup> Four students coded with no gender.

## Other Important Figures

Fall Acceptance Rate <sup>8</sup>	2017, Traditional Undergraduate	71.9%
Retention Rate <sup>9</sup>	Fall 2016 – Fall 2017, New Students, Traditional UG Only	72%
Full-Time Faculty	2017, Undergraduate	54
Student-Faculty Ratio <sup>10</sup>	2017, Traditional Undergraduate	10:1
Major Fields of Study	2017, All Majors	37
Total Fall Enrollment <sup>11</sup>	2017, All Divisions, Unduplicated	2275
12-Month Unduplicated Headcount	2016-2017, All Venues	2936
4 Year Graduation Rate <sup>12</sup>	2013-2014 Entering Cohort (184)	43.5%
5 Year Graduation Rate <sup>13</sup>	2012-2013 Entering Cohort (183)	51.4%
6 Year Graduation Rate <sup>14</sup>	2011-2012 Entering Cohort (173)	56.1%
8 Year Graduation Rate <sup>15</sup>	2009-2010 Entering Cohort (232)	49.1%
Endowment as of 8/31/2017		\$ 18,510,285
2017 Annual Operating Budget		\$ 24,500,000
Tuition Per Year (Residential) <sup>16</sup>		\$ 22,450
Room & Board Per Year <sup>16</sup>		\$ 9,400
Average Total Financial Aid Package – Fall 2017 <sup>17</sup>		\$ 17,616
Average Institutional Financial Aid Package – Fall 2017 <sup>18</sup>		\$ 15,503



<sup>8</sup> Calculation: Students accepted at the institution divided by students who applied, regardless of withdrawal.

<sup>9</sup> Top exit reasons of Fall 2016 degree-seeking, new students: Other (48), Non-Return (6), Suspension (2)

<sup>10</sup> Calculation: FTE students (full-time plus 1/3 part time) to FTE instructional faculty (full time plus 1/3 part time).

<sup>11</sup> Includes both degree seeking and non-degree seeking.

<sup>12</sup> Top exit reasons of 1314 cohort: Graduated (80), Other (44), Transfer (15), Financial (12), Personal (5)

<sup>13</sup> Top exit reasons of 1213 cohort: Graduated (94), Other (33), Transfer (14), Personal (13), Financial (10)

<sup>14</sup> Top exit reasons of 1112 cohort: Graduated (97), Transfer (15), Other (14), Personal (12), No Verification But Good Standing (11)

<sup>15</sup> Top exit reasons of 0910 cohort: Graduated (114), Other (34), Personal (22), Transfer (16), Suspension (14)

<sup>16</sup> [http://www.williamwoods.edu/admissions/undergraduate/financial\\_services/residential\\_tuition.html](http://www.williamwoods.edu/admissions/undergraduate/financial_services/residential_tuition.html)

<sup>17</sup> Full-time, first-time traditional undergraduate students. Total Financial Aid = grants from federal, state, and the institution; accepted only.

<sup>18</sup> Full-time, first-time traditional undergraduate students. Institutional grants; accepted only. Top scholarships: LEAD, WWU Scholar, Leadership, Honors, Woman's Track and Field, Academic, Presidential Scholars.

# William Woods University Enrollment Quick Facts

## Accelerated Undergraduate Division

Fall 2017

### Incoming Student Demographics<sup>1</sup>

	Incoming Students (All)	New Students	Transfer Students
<i>Total Count</i>	<b>76</b>	<b>5 (6.6%)</b>	<b>71 (93.4%)</b>
<i>Online Students</i>	76	5	71
<i>Average Age</i>	29.1	22.2	29.6
<i>Age Range</i>	18-53	18-28	21-53
<i>Female</i>	68 (89.5%)	4	64
<i>Male</i>	8 (10.5%)	1	7
<i>Full-Time</i>	40 (52.6%)	2	38
<i>Part-Time</i>	36 (47.4%)	3	33
<i>States Rep.<sup>2</sup></i>	24	3	23
<i>International<sup>3</sup></i>	0 (0%)	0	0
<i>Countries Rep.<sup>4</sup></i>	0	0	0
<i>Minority<sup>5</sup></i>	23 (30.3%)	1	22
<i>Average ACT</i>	23.33	21.00	23.80
<i>Average SAT</i>	-	-	-
<i>Avg. H.S. GPA</i>	-	-	-
<i>Avg. Hrs. Enrl.</i>	9.17	8.4	9.27

### All Student Demographics<sup>6</sup>

	Students (All)	Female	Male
<i>Total Count</i>	<b>182<sup>7</sup></b>	<b>155 (85.2%)</b>	<b>26 (14.3%)</b>
<i>Online Students</i>	179 (98.4%)	153	25
<i>Average Age</i>	32.2	32.5	30.1
<i>Age Range</i>	18-64	18-64	19-50
<i>Full-Time</i>	77 (42.3%)	66	11
<i>Part-Time</i>	105 (57.7%)	89	15
<i>States Rep.<sup>8</sup></i>	34	31	15
<i>International<sup>9</sup></i>	2 (1.1%)	1	1
<i>Countries Rep.<sup>10</sup></i>	1	1	1
<i>Minority<sup>11</sup></i>	40 (22%)	32	8
<i>Avg. WWU GPA</i>	3.40	3.41	3.36
<i>Avg. Hrs. Enrl.</i>	8.58	8.65	8.42
<i>Freshman<sup>12</sup></i>	47 (25.8%)	41	6
<i>Sophomore</i>	20 (11%)	17	3
<i>Junior</i>	31 (17%)	29	1
<i>Senior</i>	78 (42.9%)	63	15

<sup>1</sup> Degree seeking only. Incoming determined by entrance year and term. New vs. transfer determined by Entrance Code. Excludes NULL Entrance Codes.

<sup>2</sup> Excludes Missouri. Top States: Ohio (8), Oklahoma (5), Kansas (5), Louisiana (5), Florida (4)

<sup>3</sup> Based on country of citizenship, not United States of America.

<sup>4</sup> Excludes United States of America.

<sup>5</sup> Excludes "White", "Unknown", and "Non-Resident Alien".

<sup>6</sup> All accelerated, undergraduate students enrolled. Includes both degree seeking and non-degree seeking.

<sup>7</sup> One student coded with no gender.

<sup>8</sup> Excludes Missouri. Top States: Ohio (9), Oklahoma (8), Maryland (7), Louisiana (7), Illinois (6)

<sup>9</sup> Based on country of citizenship, not United States of America.

<sup>10</sup> Excludes United States of America. Country Represented: Canada (2)

<sup>11</sup> Excludes "White", "Unknown", and "Non-Resident Alien".

<sup>12</sup> Five students coded with a NULL class.

## Enrollment by Major

<b>Major</b>	<b>Total Count</b>	<b>Online Count</b>
<i>I/P Studies in ASL-English</i>	96	96
<i>Paralegal Studies</i>	29	29
<i>Business Administration</i>	27	27
<i>Undecided</i>	11	11
<i>Liberal Arts</i>	9	9
<i>Unclassified/Non-Degree</i>	6	3
<i>Workforce Leadership</i>	2	2
<i>~Management</i>	2	2
<i>~Management (Non-Traditional)</i>	1	1
<i>MBA<sup>13</sup></i>	1	1
<b>Total</b>	<b>184</b>	<b>181</b>

## Other Important Figures

Total Fall Enrollment <sup>14</sup>	2017, All Divisions, Unduplicated	2275
12-Month Unduplicated Headcount	2016-2017, All Venues	2936
Endowment as of 8/31/2017		\$ 18,510,285
2017 Annual Operating Budget		\$ 24,500,000

<sup>13</sup> Graduate student taking undergraduate courses to meet requirements for graduate program.

<sup>14</sup> Includes both degree seeking and non-degree seeking.

# William Woods University Enrollment Quick Facts

## Graduate Division

Fall 2017

### Incoming Student Demographics<sup>1</sup>

	Incoming Students (All)	New Students	Transfer Students
<i>Total Count</i>	<b>363<sup>2</sup></b>	<b>1 (0.3%)</b>	<b>362 (99.7%)</b>
<i>Online Students</i>	116 (32%)	1	115
<i>Average Age</i>	32.5	30	32.5
<i>Age Range</i>	22-57	30	22-57
<i>Female</i>	198 (54.6%)	0	198
<i>Male</i>	164 (45.2%)	1	163
<i>Full-Time</i>	272 (74.9%)	1	271
<i>Part-Time</i>	91 (25.1%)	0	91
<i>States Rep.<sup>3</sup></i>	23	0	23
<i>International<sup>4</sup></i>	6 (2%)	0	6
<i>Countries Rep.<sup>5</sup></i>	6	0	6
<i>Minority<sup>6</sup></i>	27 (7.4%)	1	26
<i>Avg. Hrs. Enrl.</i>	5.98	6	5.98

### All Student Demographics<sup>7</sup>

	Students (All)	Female	Male
<i>Total Count</i>	<b>1312<sup>8</sup></b>	<b>779 (59.4%)</b>	<b>531 (40.5%)</b>
<i>Online Students</i>	311 (23.7%)	192	118
<i>Average Age</i>	34.7	34.9	34.3
<i>Age Range</i>	21-73	21-61	22-73
<i>Full-Time</i>	945 (72%)	560	384
<i>Part-Time</i>	367 (28%)	219	147
<i>States Rep.<sup>9</sup></i>	28	25	13
<i>International<sup>10</sup></i>	15 (1.1%)	7	8
<i>Countries Rep.<sup>11</sup></i>	12	7	6
<i>Minority<sup>12</sup></i>	93 (7%)	62	31
<i>Avg. UG GPA<sup>13</sup></i>	3.79	3.70	3.94
<i>Avg. Hrs. Enrl.</i>	5.59	5.61	5.56

<sup>1</sup> Degree seeking only. Incoming determined by entrance year and term. New vs. transfer determined by Entrance Code. Excludes NULL Entrance Codes.

<sup>2</sup> One student coded with no gender.

<sup>3</sup> Excludes Missouri. Top States: Illinois (8), California (3), Maryland (2)

<sup>4</sup> Based on country of citizenship, not United States of America.

<sup>5</sup> Excludes United States of America. Countries Represented: Bosnia and Herzegovina (1), United Kingdom (1), Nigeria (1), Japan (1), Peru (1), Serbia (1)

<sup>6</sup> Excludes "White", "Unknown", and "Non-Resident Alien".

<sup>7</sup> All accelerated, undergraduate students enrolled. Includes both degree seeking and non-degree seeking.

<sup>8</sup> Two students coded with no gender.

<sup>9</sup> Excludes Missouri. Top States: Illinois (20), Kansas (15), Arkansas (11), Texas (7), California (7)

<sup>10</sup> Based on country of citizenship, not United States of America.

<sup>11</sup> Excludes United States of America. Countries Represented: United Kingdom (4), Libya (1), Gambia (1), Nigeria (1), Republic of Moldova (1), Bosnia and Herzegovina (1), Japan (1), Peru (1), Serbia (1), Venezuela (1), Canada (1), Ireland (1)

<sup>12</sup> Excludes "White", "Unknown", and "Non-Resident Alien".

<sup>13</sup> Only eight records had GPA.

## Enrollment by Major

<b>Major</b>	<b>Total Count</b>	<b>Online Count</b>
<i>Education Administration</i>	350	2
<i>Education Specialist - Administration</i>	251	2
<i>Education Leadership</i>	231	0
<i>Education- Athletics/Activities Admin</i>	124	91
<i>Entrepreneurial Leadership (MBA)</i>	119	70
<i>Education Curriculum and Instruction</i>	90	40
<i>Education- Teaching and Technology</i>	46	46
<i>Education Specialist - Curriculum Leadership</i>	30	0
<i>Healthcare Administration</i>	27	27
<i>Education Certification</i>	15	15
<i>Education Specialist - Admin Princ/Sup</i>	15	11
<i>Education -STEM Curriculum</i>	7	0
<i>Unclassified/Non-Degree</i>	2	2
<b>Total</b>	<b>1312</b>	<b>311</b>

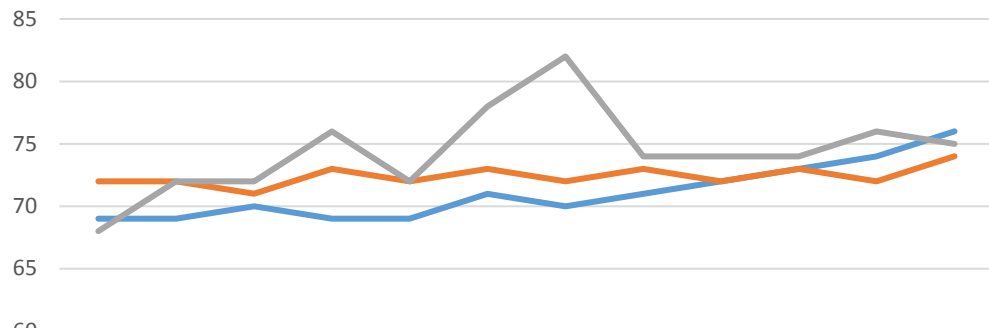
## Other Important Figures

Total Fall Enrollment <sup>14</sup>	2017, All Divisions, Unduplicated	2275
12-Month Unduplicated Headcount	2016-2017, All Venues	2936
Endowment as of 8/31/2017		\$ 18,510,285
2017 Annual Operating Budget		\$ 24,500,000

<sup>14</sup> Includes both degree seeking and non-degree seeking.

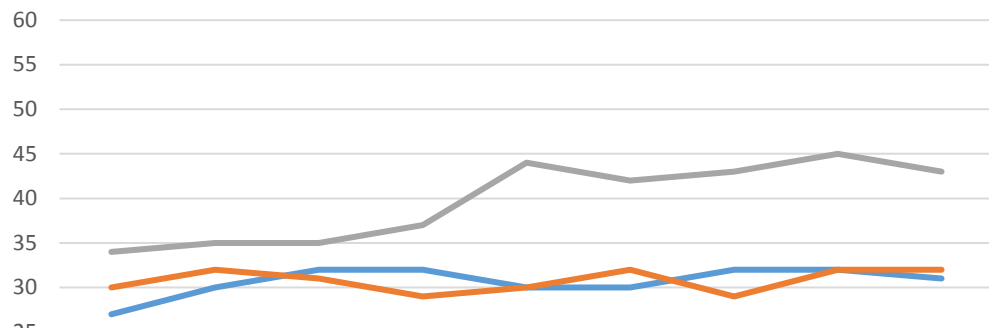
Prepared by Stacy Maskey, PMP, Director of Institutional Research  
October 2017

### Median Full-Time Retention Rate



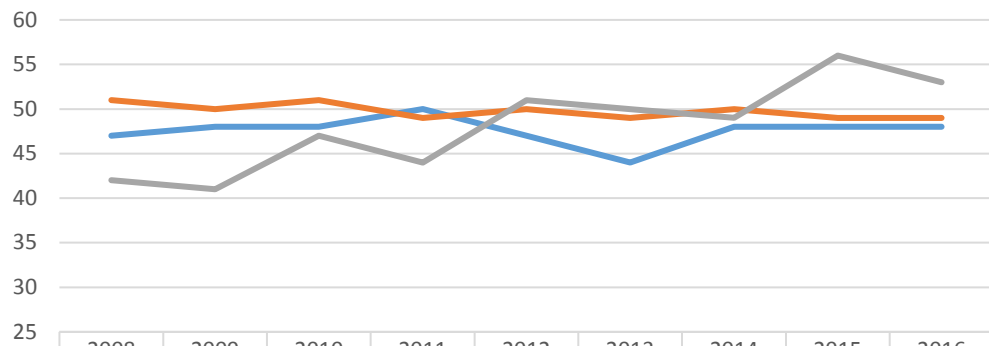
	2004	2005	2006	2007	2008	2009	2010	2011	2012	2013	2014	2015
IPEDS Peer	69	69	70	69	69	71	70	71	72	73	74	76
US News	72	72	71	73	72	73	72	73	72	73	72	74
William Woods	68	72	72	76	72	78	82	74	74	74	76	75

### Median 4-Year Graduation Rate



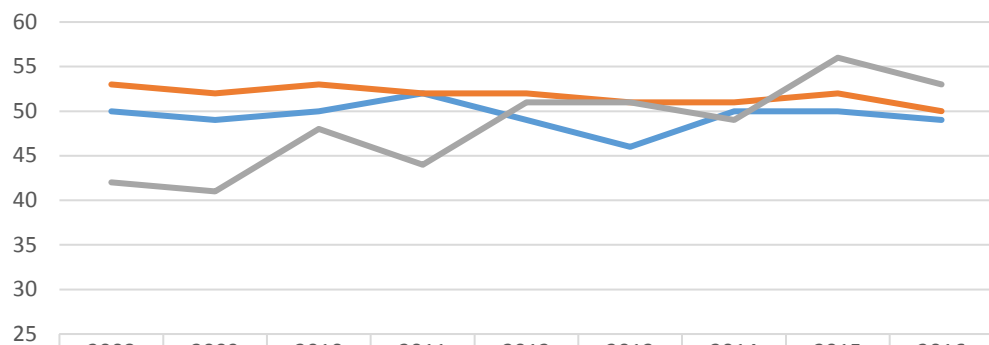
	2008	2009	2010	2011	2012	2013	2014	2015	2016
IPEDS Peer	27	30	32	32	30	30	32	32	31
US News	30	32	31	29	30	32	29	32	32
William Woods	34	35	35	37	44	42	43	45	43

### Median 6-Year Graduation Rate



	2008	2009	2010	2011	2012	2013	2014	2015	2016
IPEDS Peer	47	48	48	50	47	44	48	48	48
US News	51	50	51	49	50	49	50	49	49
William Woods	42	41	47	44	51	50	49	56	53

### Median 8-Year Graduation Rate



	2008	2009	2010	2011	2012	2013	2014	2015	2016
IPEDS Peer	50	49	50	52	49	46	50	50	49
US News	53	52	53	52	52	51	51	52	50
William Woods	42	41	48	44	51	51	49	56	53

### Employment Outcomes and Licensure Rates

- Information on the employment outcomes of recent undergraduate students is compiled by the Office of Career Services, and is summarized here:  
[https://www.williamwoods.edu/student\\_life/undergraduate\\_student\\_experience/student\\_services/career\\_services/](https://www.williamwoods.edu/student_life/undergraduate_student_experience/student_services/career_services/)
- Information on the Board of Certification Pass Rate for the Athletic Training program is available here:  
[http://www.williamwoods.edu/academics/undergraduate/programs\\_and\\_degrees/sports\\_studies/bachelors\\_athletic\\_training.html](http://www.williamwoods.edu/academics/undergraduate/programs_and_degrees/sports_studies/bachelors_athletic_training.html)